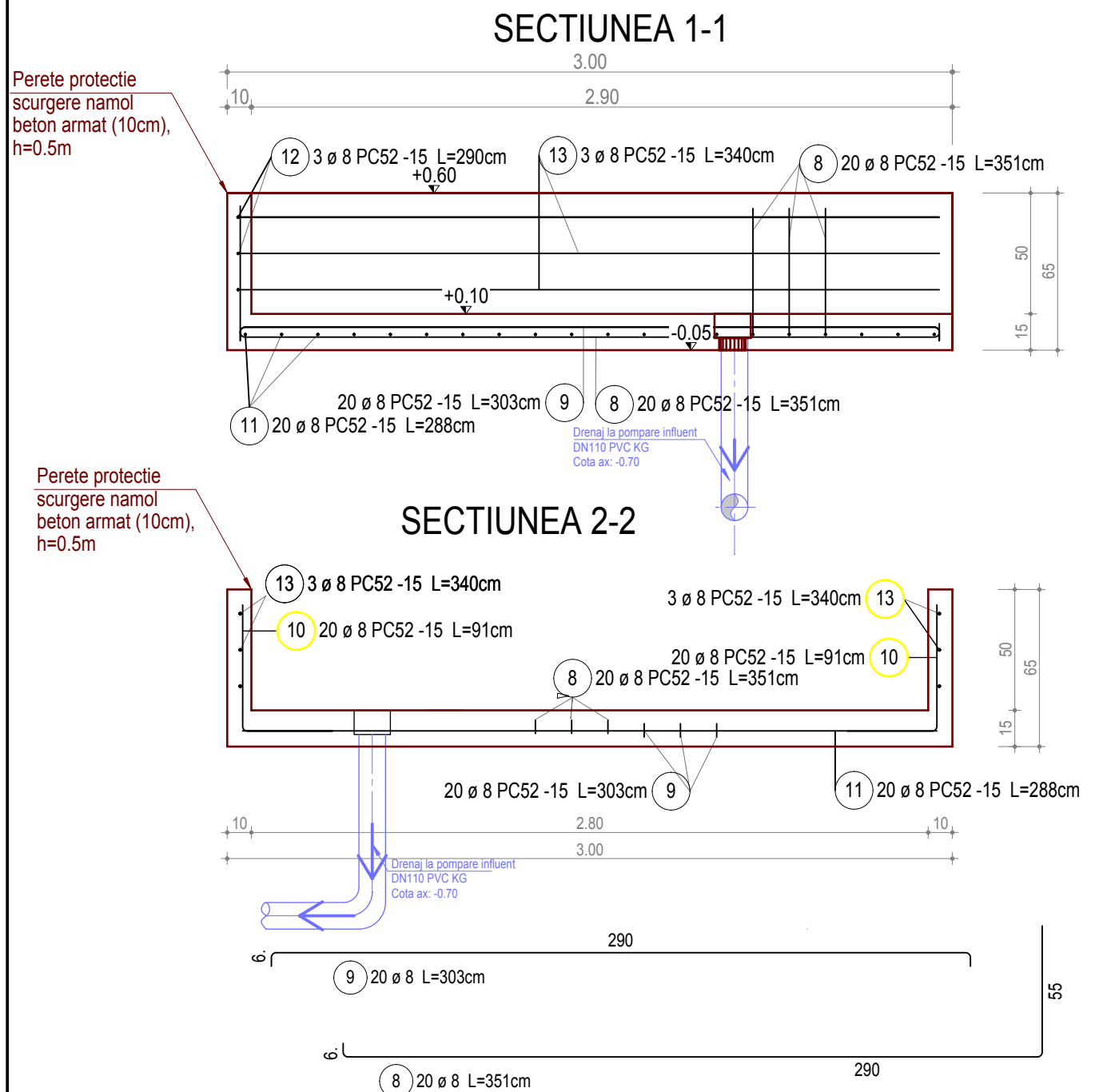
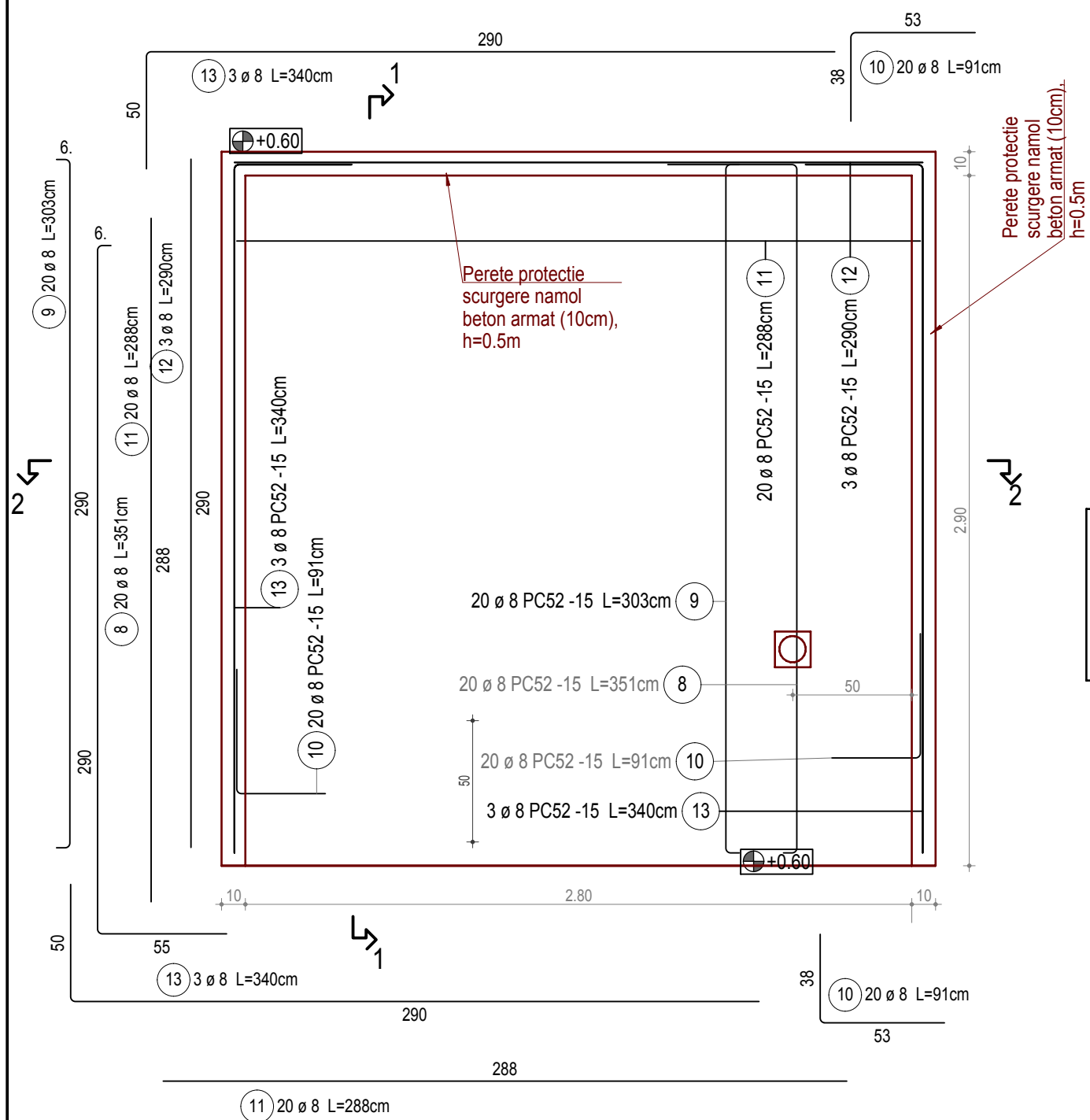


PLAN ARMARE - PLATFORMA USCARE NAMOL - (PN)
Scara 1:25
VEDERE IN PLAN



Lista armare cu fasonari

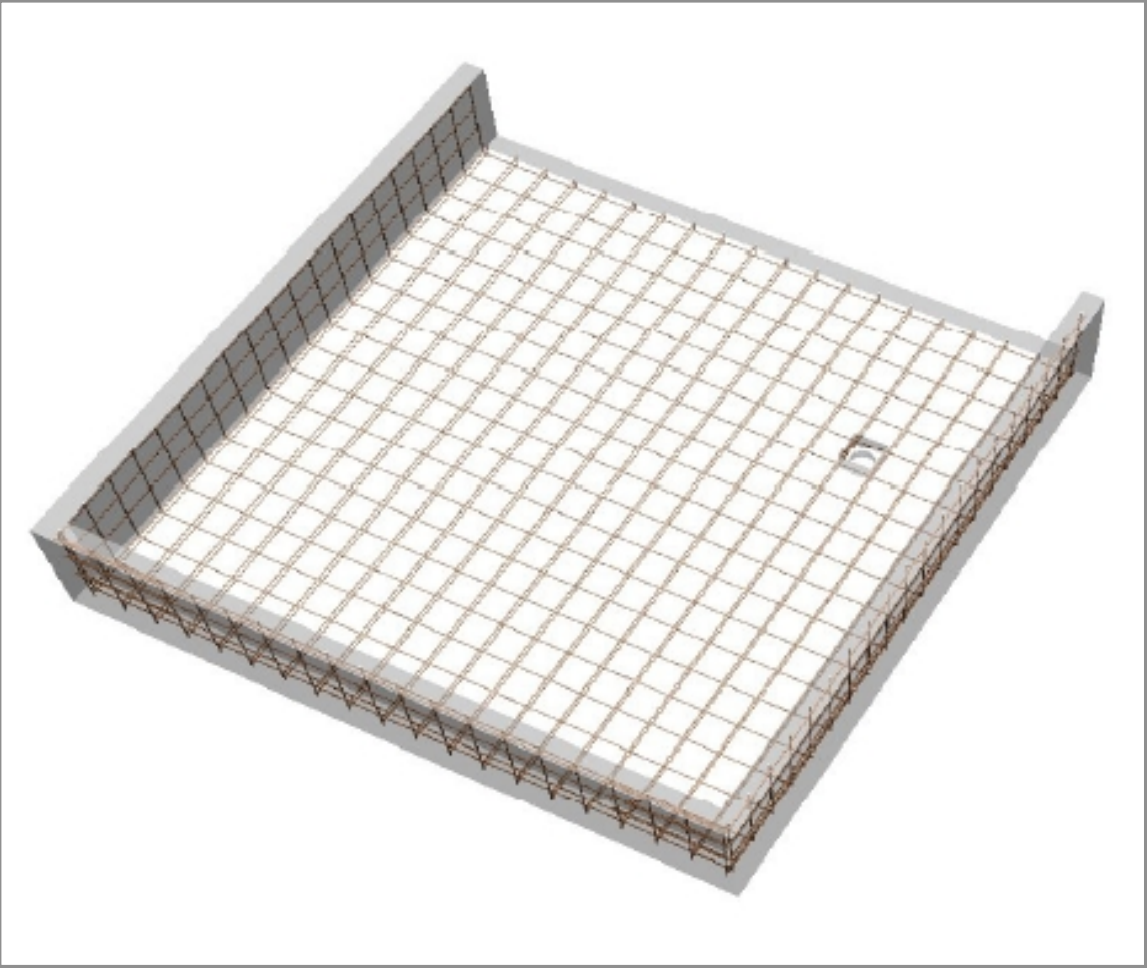
Poz.	Buc.	Ø	Unit.	Cal.	Bare cotate	Total	Greut
		[mm]	[m]	Otel	(fara scara)	Lung.	[kg]
8	20	8	3.51	PC52		70.20	27.73
9	20	8	3.03	PC52		60.60	23.94
10	40	8	0.91	PC52		36.40	14.38
11	20	8	2.88	PC52		57.60	22.75
12	6	8	2.90	PC52		17.40	6.87
13	30	8	3.40	PC52		102.00	40.29

Beton simplu: C8/10 (B150)
Beton armat: C18/22,5 (B300)
Otel beton: Ø10 PC52
Acoperire beton: 5 cm

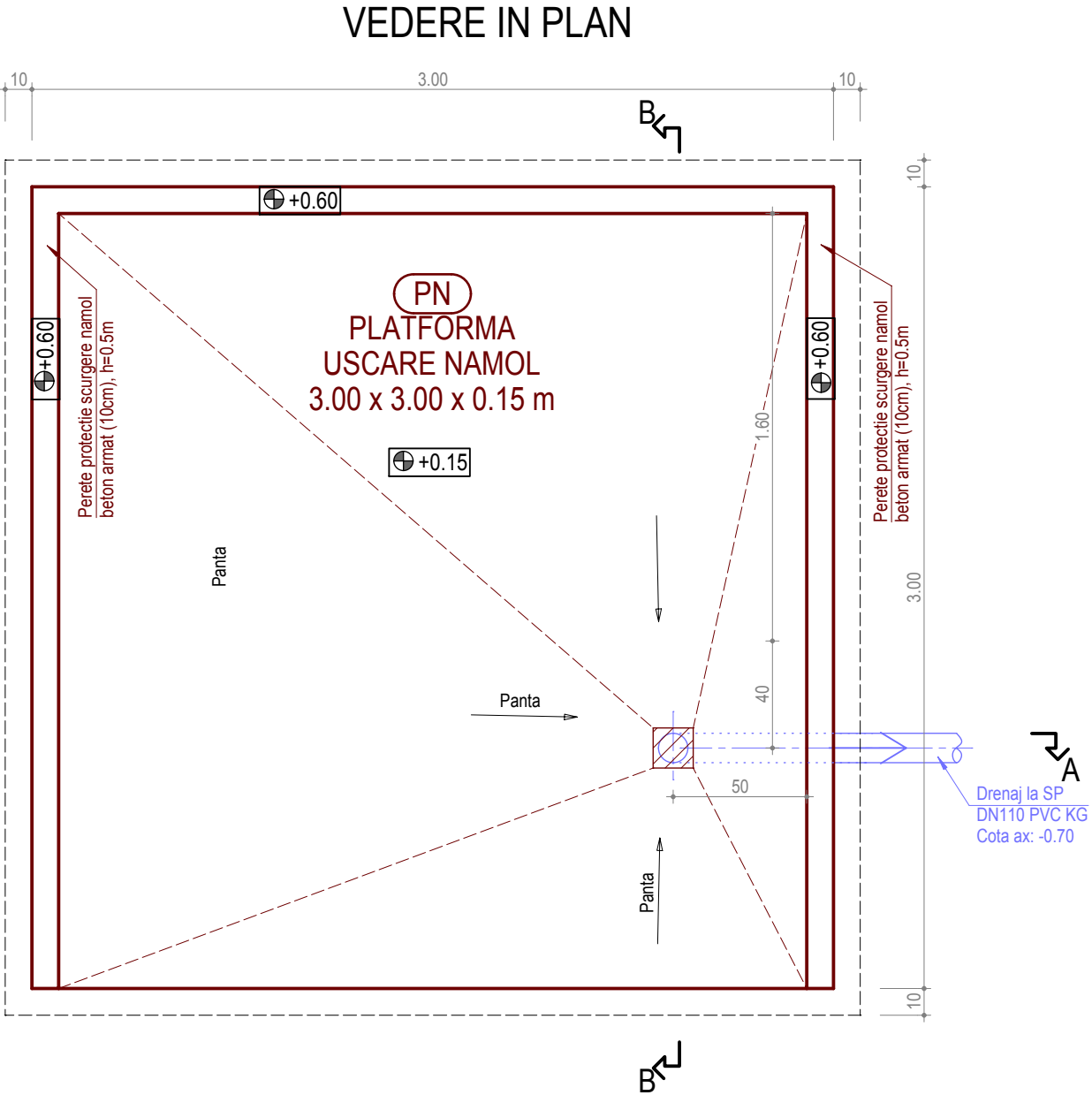
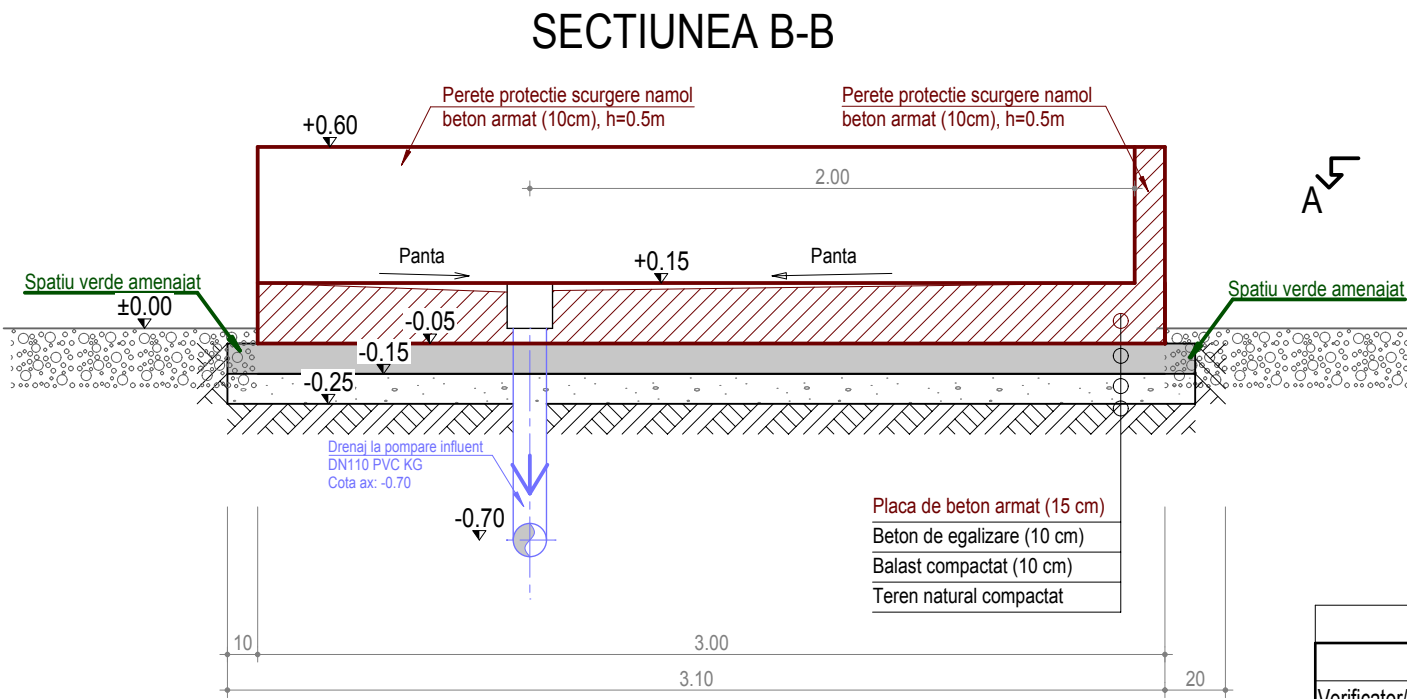
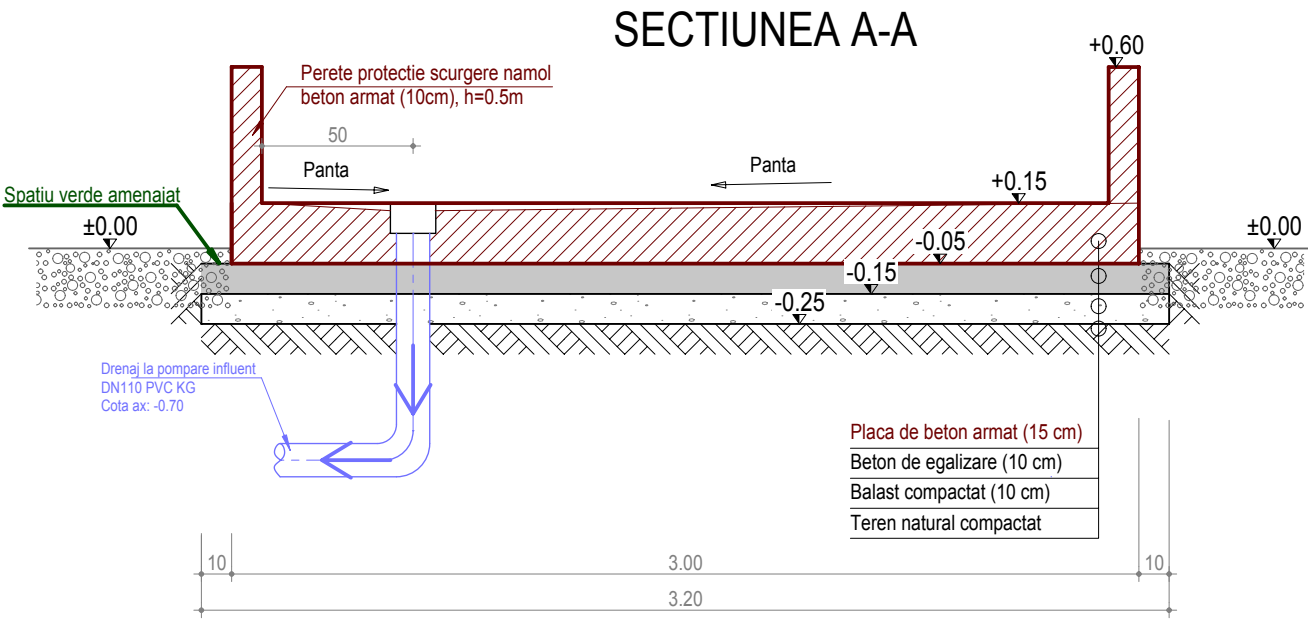
Greutate totala OB37 (kg): 0.00 kg
Greutate totala PC52 (kg): 135.96 kg
Greutate totala PC60 (kg): 0.00 kg
Greutate totala OB37 + PC52 + PC60 (kg): 135.96 kg

~ 140.00 kg

IZOMETRIE



PLAN COFRAJ - LUCRARI CIVILE - PLATFORMA USCARE NAMOL - (PN)
Scara 1:25



Nota: Pentru detalii referitoare la amplasament consultati plansa SE -IH2.

Nota: Toate caminele si bazinele vor fi hidroizolate corespunzator impotriva infiltratiilor.

Verificator/expert	Titlu / Nume	Semnatura	Cerinta	Referat / Expertiza nr / Data	Pr.nr.:
S.C. PANMITI CON S.R.L.	CUI RO 10110990, J18/9/1998, Mun. Tg.-Jiu, Str. Aleea Ioan Slavici, Nr.3, Bl.3, Sc.1, Ap.1, Jud. Gorj			Beneficiar: COMUNA CAPRENI	18/2015
Amplasament: COMUNA CAPRENI, JUD. GORJ				Titlul proiectului: CONSTRUIRE CANALIZARE SI STATIE DE EPURARE APE UZATE, COMUNA CAPRENI, JUDETUL GORJ	Faza: P.T.
Specificatie	Titlu / Nume	Semnatura	Scara: 1:25	Titlul plansei: PLAN COFRAJ SI ARMARE PLATFORMA USCARE NAMOL	Pl. nr.: SE - CR8
SEF PROIECT	ing. Fintina Adrian				
PROIECTAT	ing. Vladoiu Gheorghe				
DESENAT	ing. Vladoiu Gheorghe				